

VINTAGE I

NEREIDS | 2008 (2020) | 26,8 M / 88'8" FT | PRICE **€1.800.000 (VAT excluded)**

THIS 27M ALUMINUM YACHT IS A SUPERB MODERN CLASSIC WITH A GORGEOUS LINE. BUILD OF RUGGED ALUMINUM, HUGE ATTENTION HAS BEEN PAID TO PRODUCING A LIGHT YACHT WITH EXPRESS SAILING PERFORMANCE. MANY YEARS OF SAILING EXPERIENCE INFLUENCED THE CONSTRUCTION OF THIS YACHT. HER INTERIOR IS ULTRA-MODERN AND AN PLEASANT CONTRAST TO HER CLASSIC HULL LINE. DESIGNED BY JULIUS STRAWINSKY, WHO ALSO DESIGNED SAILING YACHT ALEXA OF LONDON. BUILT IN 2008, REFITTED IN 2017, AND IN 2020, SHE HAD THE SAME OWNER FROM DESIGN IDEA TO SAILING TO THE OTHER SIDE OF THE WORLD IN 2022 AND DID A WORLD CIRCUMFERENCE IN TWO YEARS 2021-2023. TAKING VERY WELL CARE OF BY EXPERIENCED CREW. SHE'S BEEN ENJOYED FOR FAMILY HOLIDAYS, ENTERTAINING WITH FRIENDS, AS WELL AS BEING CHARTERED IN THE MEDITERRANEAN AND CARIBBEAN. FOR THE LAST 18 MONTHS, HER OWNER IS FULFILLING HIS LIFELONG DREAM TO EXPLORE FRENCH POLYNESIA BEFORE LOOKING FOR A NEW OWNER. VINTAGE I CAN ACCOMMODATE 6 GUESTS IN A MASTER AND 2 GUEST CABINS WITH ENSUITE BATHROOMS. SHE HAS A GREAT DECK AREA WHICH IS CLASSIC IN DESIGN YET FUNCTIONAL FOR GUESTS TO ENJOY DAYS IN THE SUN AND EVENINGS UNDER THE STARS. THERE IS A DINING TABLE ON DECK FOR ALFRESCO DINING UNDER A BIMINI SHADE.

VINTAGE I

NEREIDS | 2008 (2020) | 26,8 M / 88'8" FT | PRICE **€1.800.000 (VAT excluded)**

SPECIFICS

LENGTH: 26,8 M (88.8 FT)

BEAM: 6 M (20 FT)

DRAFT: 3.05 M (10 FT)

HULL MATERIAL: ALUMINIUM

DECK MATERIAL: TEAK

CLASSIFICATION: BUREAU VERITAS (2022)

DESIGNERS: JULIUS STRAWINSKY (EXTERIOR)/PATRICK RAEMDONCK (INTERIOR)

ACCOMODATION : 6 GUESTS IN A MASTER AND 2 GUEST CABINS WITH ENSUITE

BATHROOMS

YEAR : 2008/2018 (REFIT INTERIOR AND DECK), 2020 (REFIT TECHNICAL AND RIGGING)

VINTAGE I

NEREIDS | 2008 (2020) | 26,8 M / 88'8" FT | PRICE **€1.800.000 (VAT excluded)**

GALLEY/LAUNDRY

REFRIGERATOR : 24V DC AIR COOLED (2X)

DEEP-FREEZER : 24V DC AIR COOLED (2X)

STOVE : INDUCTION – 5 PLATES 220V 50HZ

OVEN : SIEMENS 220V 50HZ

MICROWAVE : MIELE 220V 50HZ

DISHWASHER : MIELE 220V 50HZ

WINE FRIDGE : MIELE 220V 50HZ

WASHING MACHINE : BOSCH SERIES 6 (2022) 220V 50HZ

DRYER : BOSCH SERIES 6 (2022) 220V 50HZ

VINTAGE I

NEREIDS | 2008 (2020) | 26,8 M / 88'8" FT | PRICE **€1.800.000 (VAT excluded)**

RIGGING

RIG : ALUCARBON 7/8 FRACTIONAL RIG WITH LAZYJACKS

MAST : 33M, ALUCARBON WHITE-PAINTED CARBON FIBRE

BOOM : ALUCARBON WHITE-PAINTED CARBON FIBRE BOOM WITH HAYRACK STRACKING SYSTEM

REEFING SYSTEM : SLAB REEFING

SAILS (RENEWED 2018)

MAIN : QUANTUM FULLY BATTENED SPECTRA MAINSAIL WITH 3 REEFS FITTED

GENOA : FURLING HI-CUT YANKEE/GENOA SPECTRA CARBON

CODE EASY : BLACK CODE EASY 2020

STAY : STAYSAIL SPECTRA CARBON, REEFABLE (1)

VINTAGE I

NEREIDS | 2008 (2020) | 26,8 M / 88'8" FT | PRICE **€1.800.000 (VAT excluded)**

DECK EQUIPMENT

WINCHES : ANTAL STAINLESS STEEL, 2XW70 2 SPEED ELECTRIC SELF-TAILING, 5X W70 SPEED MANUAL SELF-TAILING, 3X W80 ELECTRIC SELF-TAILING / 2XW44 2 SPEED MANUAL SELF-TAILING
WINDLASS : MUIR VRC-4500 3,500W 24V DC
ANCHOR & CHAIN : 1 CZR 60KG / 1 CQR 80KG / 100M CHAIN 16MM
AWNING : STAINLESS STEEL BIMINI STRUCTURE WITH CREAM CANVAS BIMINI TOP AND CANVAS/ PLASTIC SIDE+FRONT RAIN PROTECTION

MACHINERY

MAIN ENGINE : MAN - DOOSAN/DAEWOO L136TI 230HP, 6 CYLINDER IN-LINE, 2008
GEAR BOX : DONG-I WITH 2.09:1 REDUCTION RATIO
SPEED : SPEED MAX: 10,5 KNOTS, CRUISING: 8 KNOTS
FUEL SEPARATOR : RACOR 75500 FGC
PROPELLER : PYTHON-DRIVE, 3 BLADED MAXPROP SPINDLE 110NM
RANGE : 1,500 NM

VINTAGE I

NEREIDS | 2008 (2020) | 26,8 M / 88'8" FT | PRICE **€1.800.000 (VAT excluded)**

TANK CAPACITY

FUEL TANK : 2,200L

FRESH WATER TANK : 2X 750 L, PORT AND STARBOARD

WASTE WATER : BLACK: 150L + 300L, GREY: 800L

ANCILLARY MACHINERY

WATER MAKER : PURE WATER 230V AC 50HZ - 120L/H

HOT WATER HEATER : YES

AIR CONDITIONING : YES

ELECTRICAL SYSTEMS

GENERATOR : NORTHERN LIGHTS, 16KW, DIESEL

BATTERIES : 900AH

BATTERY CHARGER : ICTRON ENERGY QUATTRO 24/8000W/200A (2017)

SHORE POWER : 230V AC RING MAIN

VINTAGE I

NEREIDS | 2008 (2020) | 26,8 M / 88'8" FT | PRICE **€1.800.000 (VAT excluded)**

NAVIGATION

AUTOPILOT : JEFA
COMPASS : PLASTIMO HORIZON 135
GPS/PLOTTER : RAYMARINE
RADAR : RAYMARINE C70
NAVTEX : FURUNO NX 700
BAROGRAPH : CLIPPER
ECHO SOUNDER : CLIPPER
WIND SPEED : CLIPPER

COMMUNICATION

GSM : GMDSSS A
VHF : ICOM HM139B COMMANDMIC
SATCOM : FURUNO SATCOMC
IRIDIUM GO

****THIS DOCUMENT CANNOT BE CONSIDERED CONTRACTUAL IN ANY WAY. IT IS GIVEN FOR INFORMATION PURPOSES ONLY.***































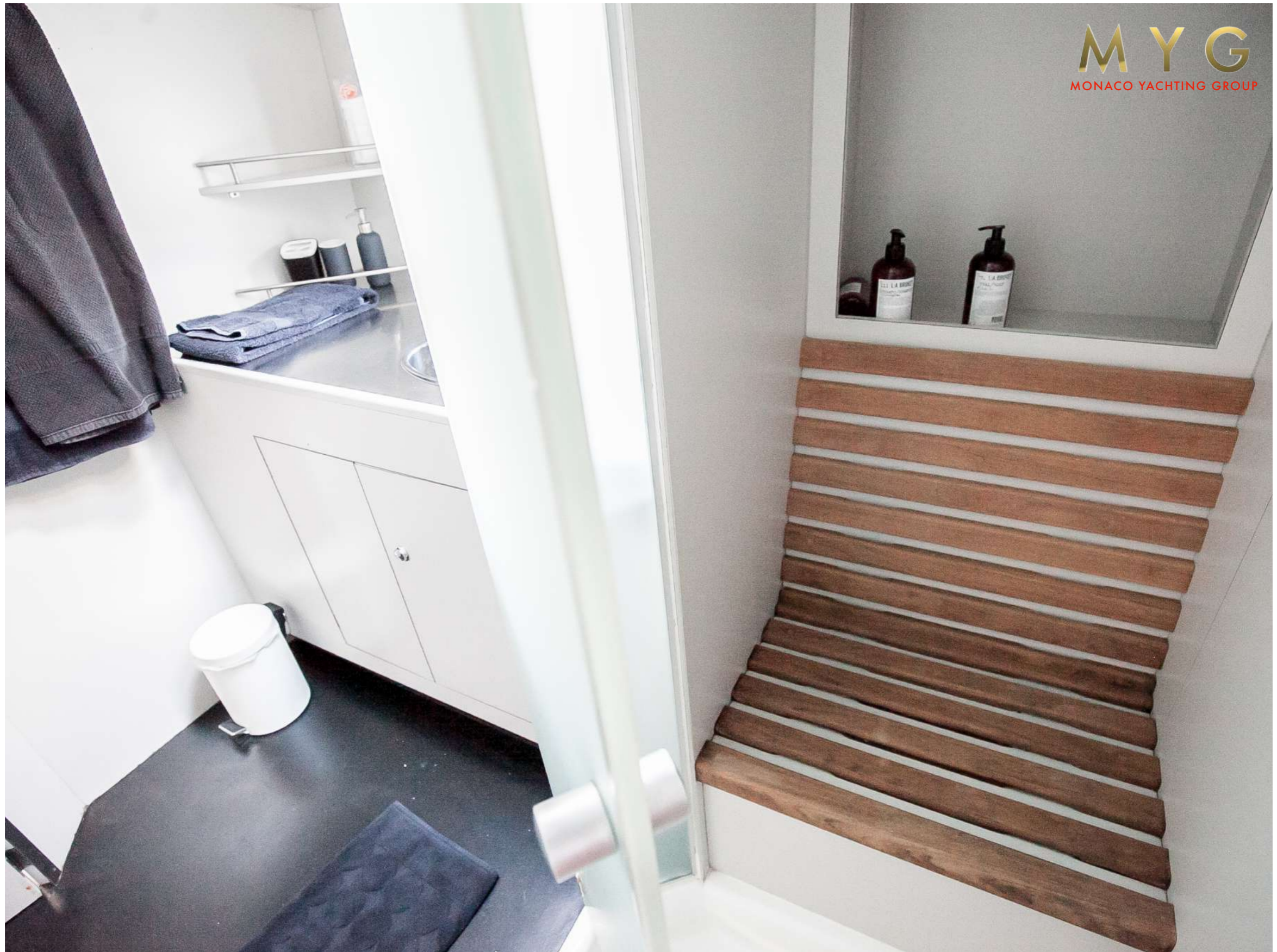


















MYG
MONACO YACHTING GROUP

20, AV. DE FONTVIEILLE, LE CORONADO, MONACO, 98000

INFO@MYG.MC

WWW.MYG.MC